

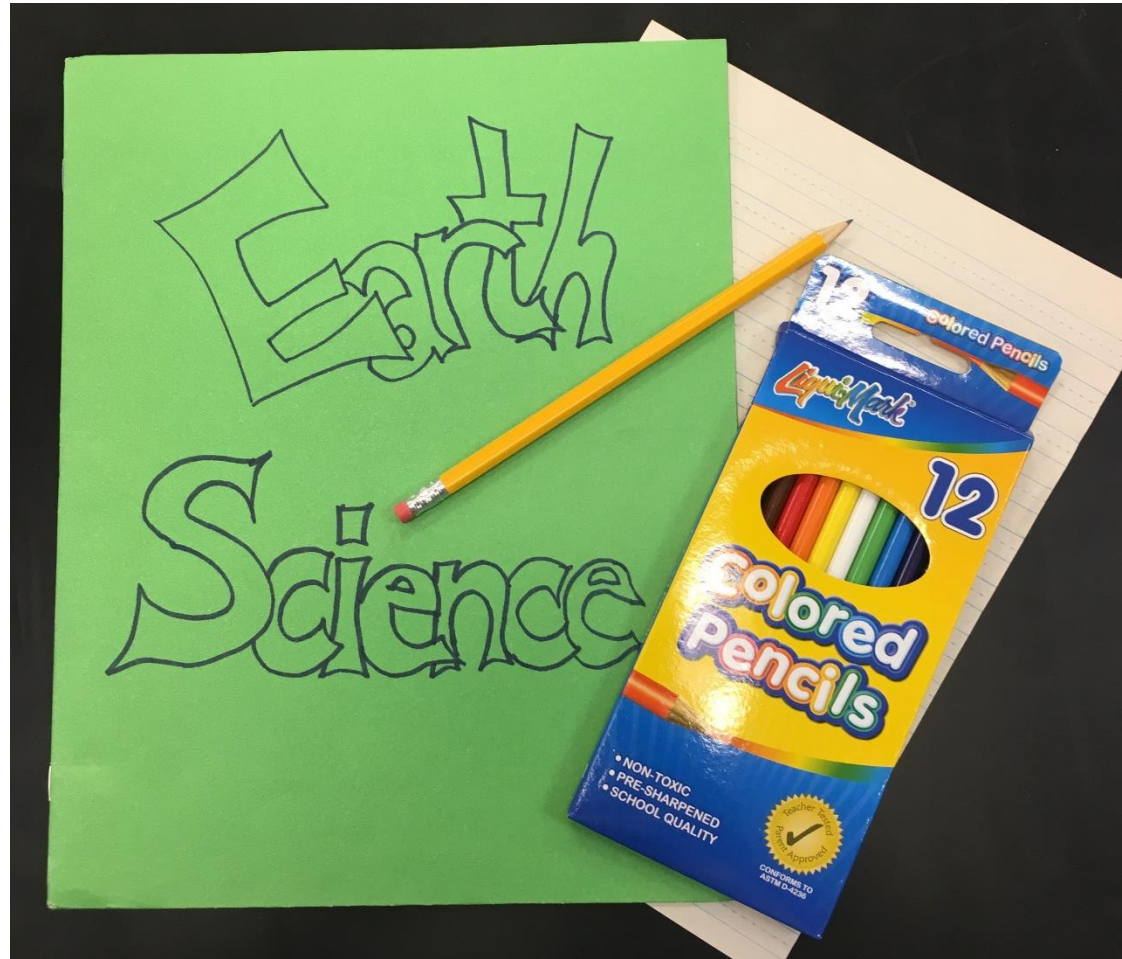


Science Class

What do I need to know?

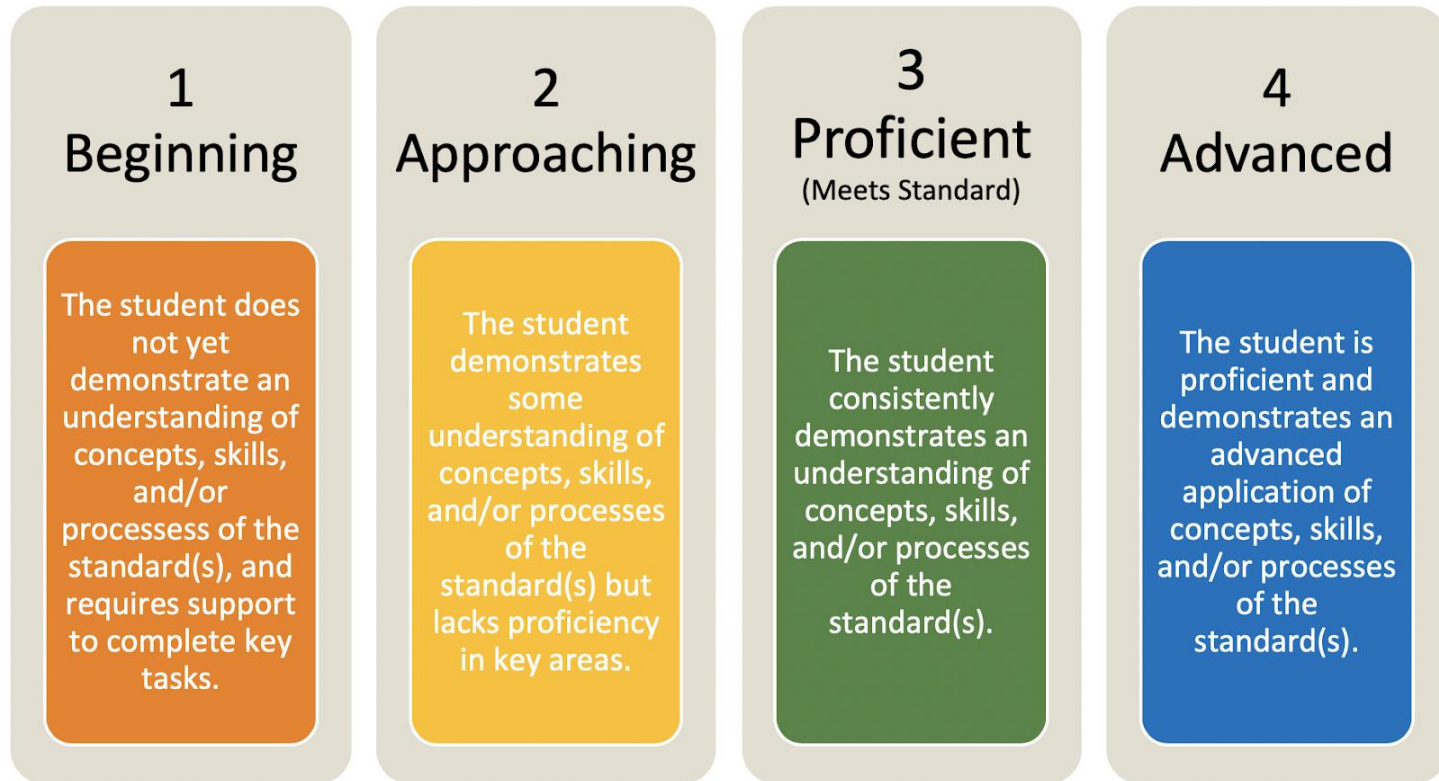
Things to bring to class everyday.

- Science folder
- Pencil
- Colored Pencils
- Paper



Grading

- Based upon mastery of a standard being taught. A “4, 3, 2, 1” scale is used to identify the level of mastery a student has achieved on a particular standard or objective as follows:



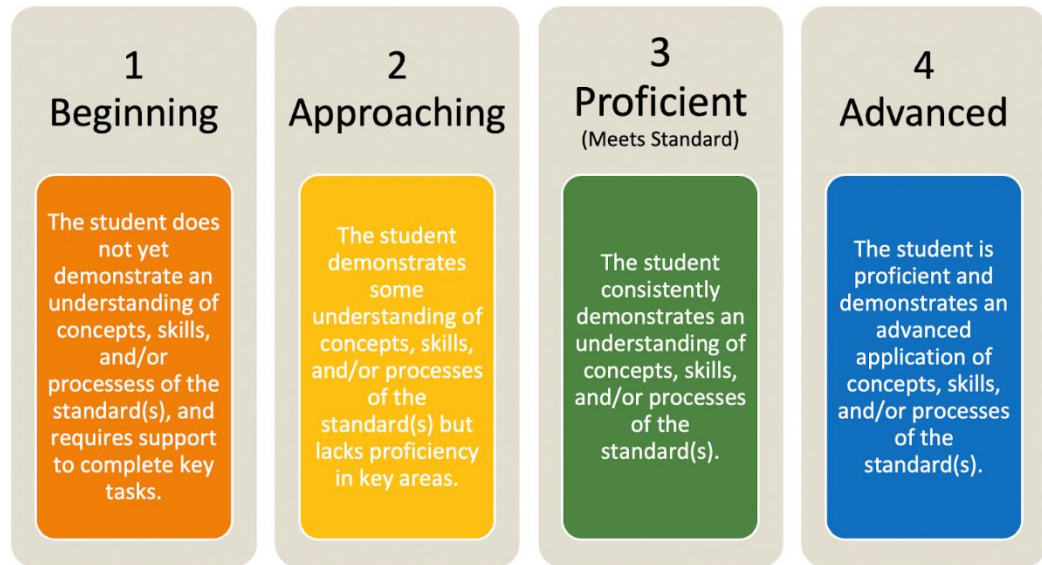
F	D-	D	D+	C-	C	C+	B-	B	B+	A-	A
0-0.74	0.75-0.99	1.0-1.24	1.25-1.49	1.5-1.74	1.75-1.99	2.0-2.24	2.25-2.49	2.5-2.74	2.75-2.99	3.0-3.24	3.25-4.0

80% Assessments

- Test retakes
 - All missing/late work must be turned in
 - Retake test score will replace lower score
 - During iFlight, before school, or after school

20% Practice:

- Assignments
- Labs and Activities



F	D-	D	D+	C-	C	C+	B-	B	B+	A-	A
0-0.74	0.75-0.99	1.0-1.24	1.25-1.49	1.5-1.74	1.75-1.99	2.0-2.24	2.25-2.49	2.5-2.74	2.75-2.99	3.0-3.24	3.25-4.0

SRMS EARTH SCIENCE

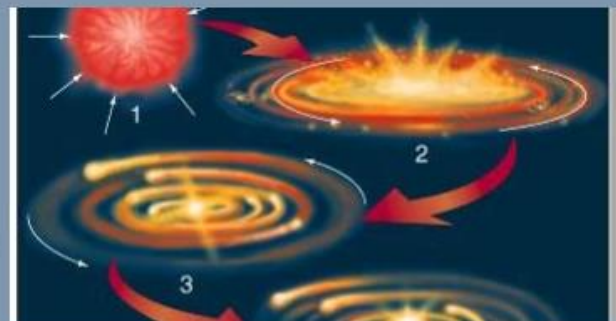
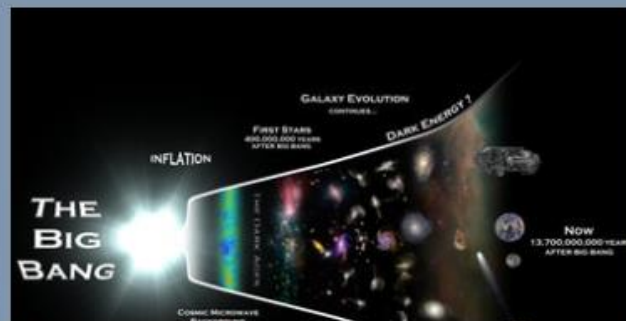
HOME CONTACT CALENDAR

Welcome Back To Sunset Ridge Middle School

Checkout the Classroom Policies PowerPoint

Work on What is Earth Science Assignments

1st Quarter Assignments



What is Earth Science?

Earth Systems

- The scientific study of Earth and the universe around it.



Astronomy

- The scientific study of the universe.
 - Big Bang Theory
 - Life cycle of stars



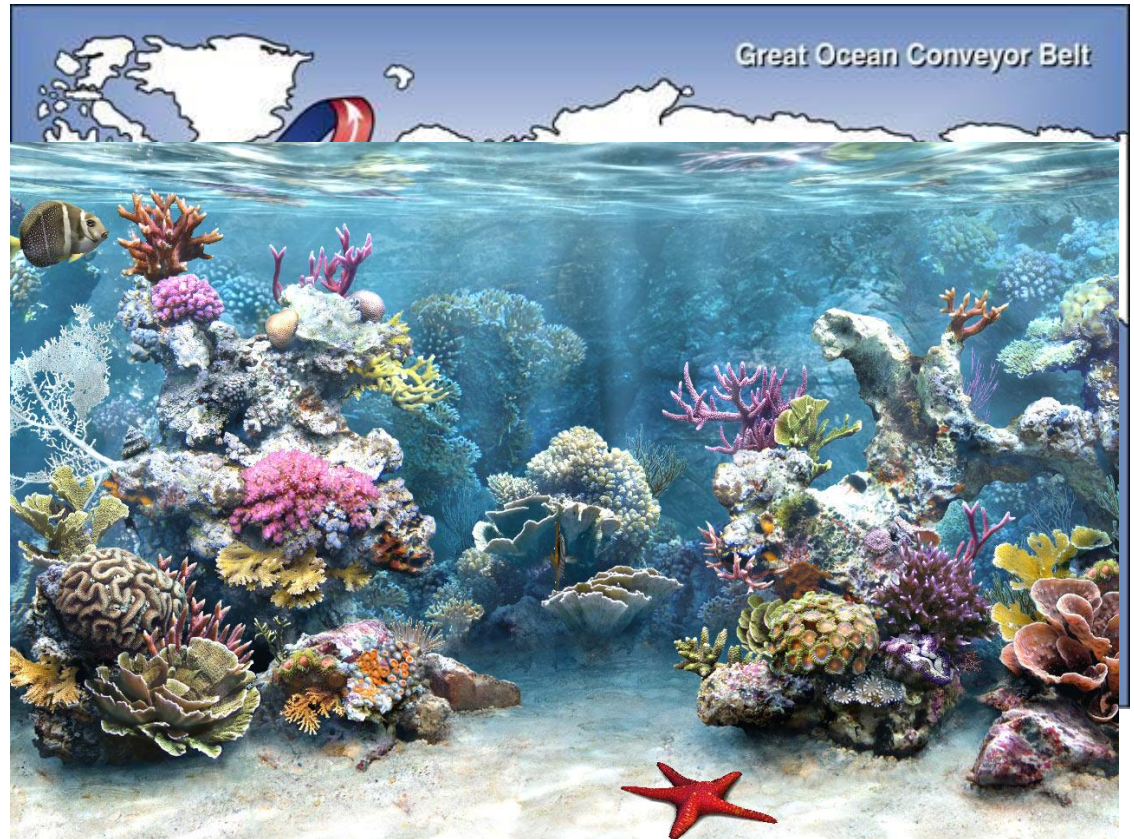
Geology

- The scientific study of the origin, history, and structure of Earth and the processes that shape Earth.
 - Study the crust
 - Study Earth's interior



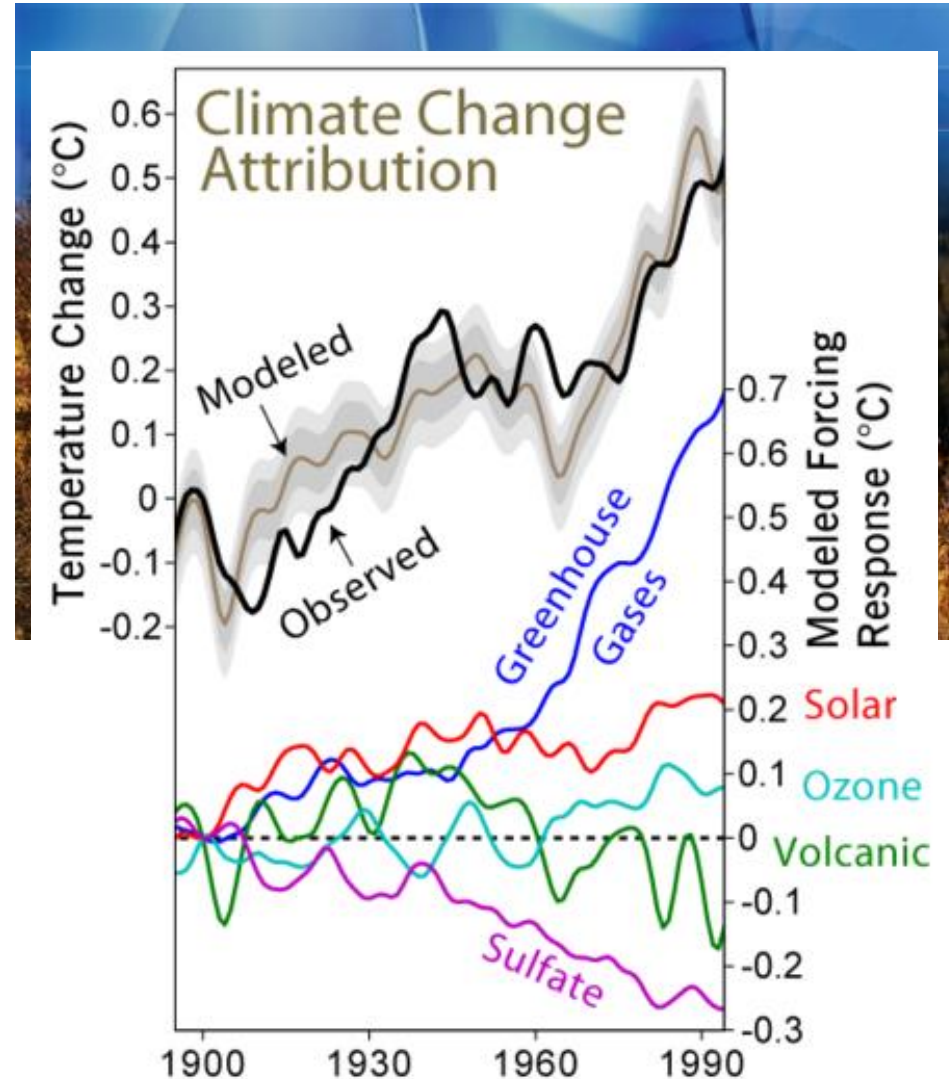
Oceanography

- The scientific study of the ocean.
 - Ocean currents
 - Ocean floor



Meteorology

- The scientific study of Earth's atmosphere.
 - Weather
 - What is happening today.
 - Climate
 - The patterns of weather that occur over periods of time.



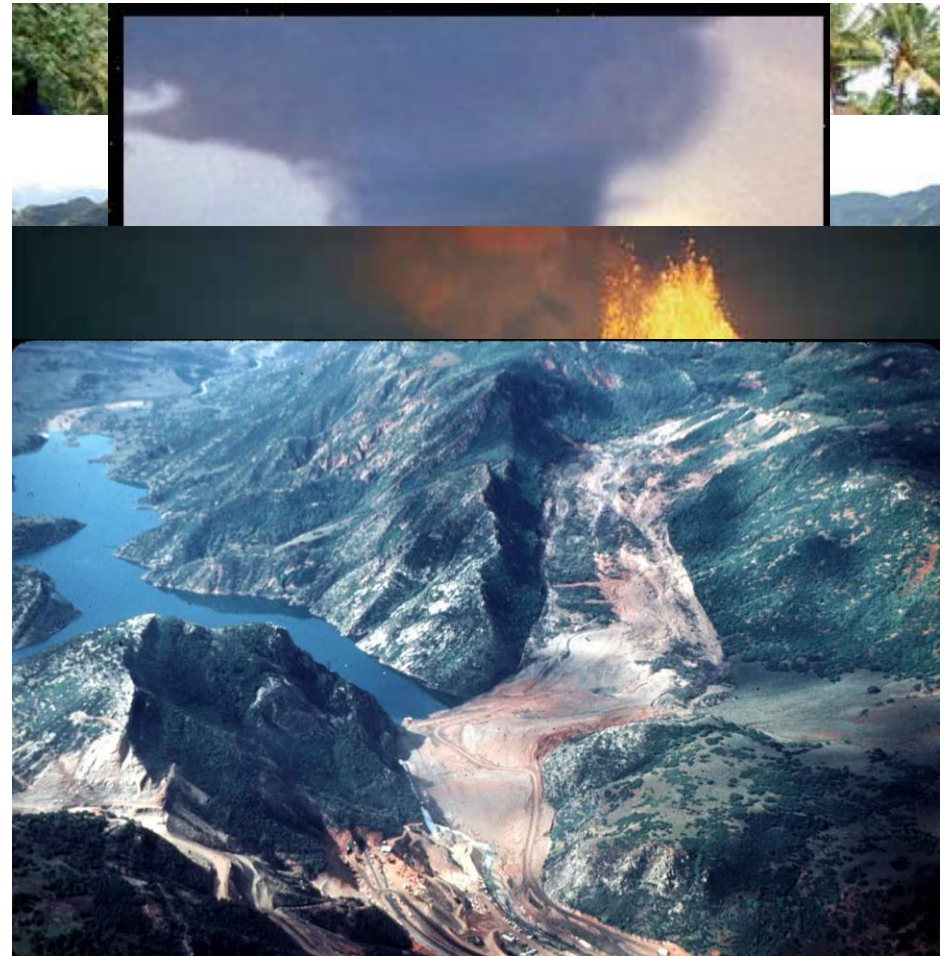
Environmental Science

- Study the ways in which humans interact with their environment.
 - Natural resources
 - Water Quality
 - Pollution
 - Health of plant and animal species on Earth



The Importance of Earth Science

- Natural forces not only shape Earth but also affect life on Earth.
 - Earthquake
 - Tsunami
 - Tornado
 - Hurricane
 - Volcano
 - Landslide



Communication

- You and your parents can communicate to me through e-mail (I check it several times a day)
- mark.schiszler@jordandistrict.org
- Phone: 801-412-2475 ext. # 46422
- Class Website:
www.srmsearthscience.weebly.com